

Local Historic Designation

DESIGNATION REQUEST FOR
414 PINE STREET
HPB# 01-2016
3/7/2016



Agenda

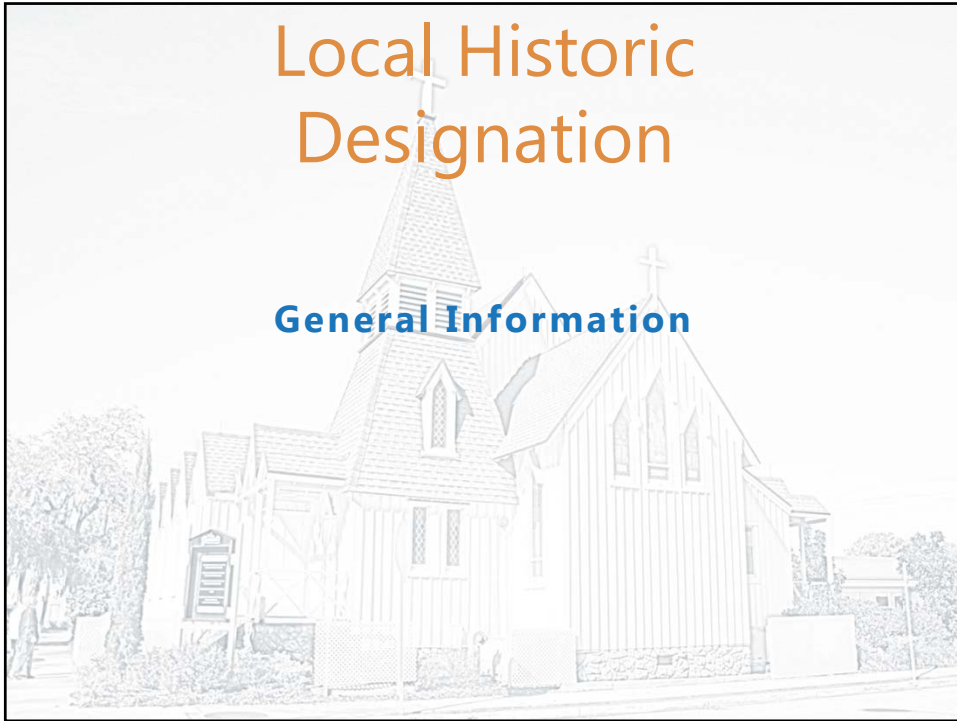


- General Information
- Property Features
- Significance
- Recommendation



Local Historic Designation

General Information



General Information



- ❑ Current Owner:
 - ❑ St. Gabriel's Episcopal Church
- ❑ Property Address:
 - ❑ 414 Pine Street



General Info: History



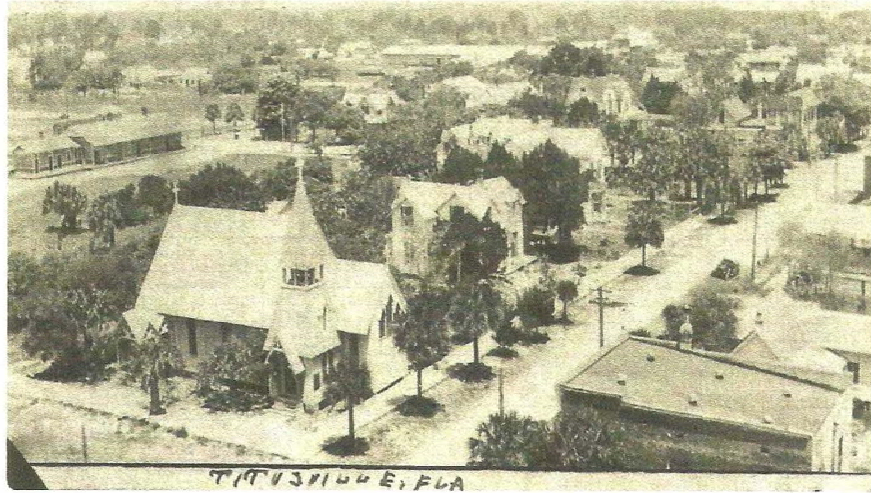
- General History
 - 1871: First Episcopal service held in Titusville, at the Titus' House
 - 1886: Land donated for St. Johns Episcopal Church by Mary Evalina Titus
 - 1887: Land cleared; Architectural plans drawn following designs of Richard Upjohn; building materials collected
 - 1888: Church constructed by Mr. R.S. Decker; lectern, pulpit, and pews built by Mr. P.J. Hall
 - 1888: Donation of memorial windows, one picturing St. Gabriel, by Mrs. J.N. Pritchard; Church votes to change name to St. Gabriel's Church

General Info: Contextual History



- 1700s
 - Spanish & English rule over Florida
 - Original Indian tribes (Ais) decimated due to disease/warfare/malnutrition
 - Florida haven for runaway slaves, Seminole Indians, and British loyalists
- 1818-1821
 - Florida invaded by Andrew Jackson (U.S.) during First Seminole War, leading to Florida joining United States
- 1835
 - Settlement of Titusville begins
- 1867
 - Titusville founded (as Sand Point)
- 1873
 - Town officially named Titusville
- 1888
 - St. Gabriel's Church built
- 1890
 - Railroad arrives in Titusville

General Info: Contextual History



Historic Designation Report

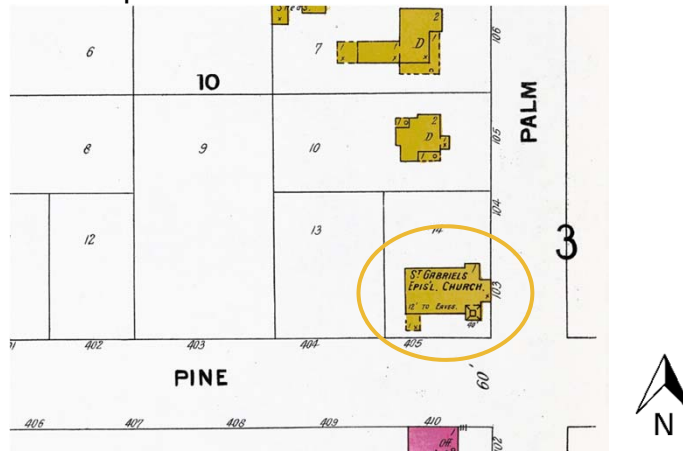


City of Titusville, Florida

General Information



Sanborn Map, 1899:



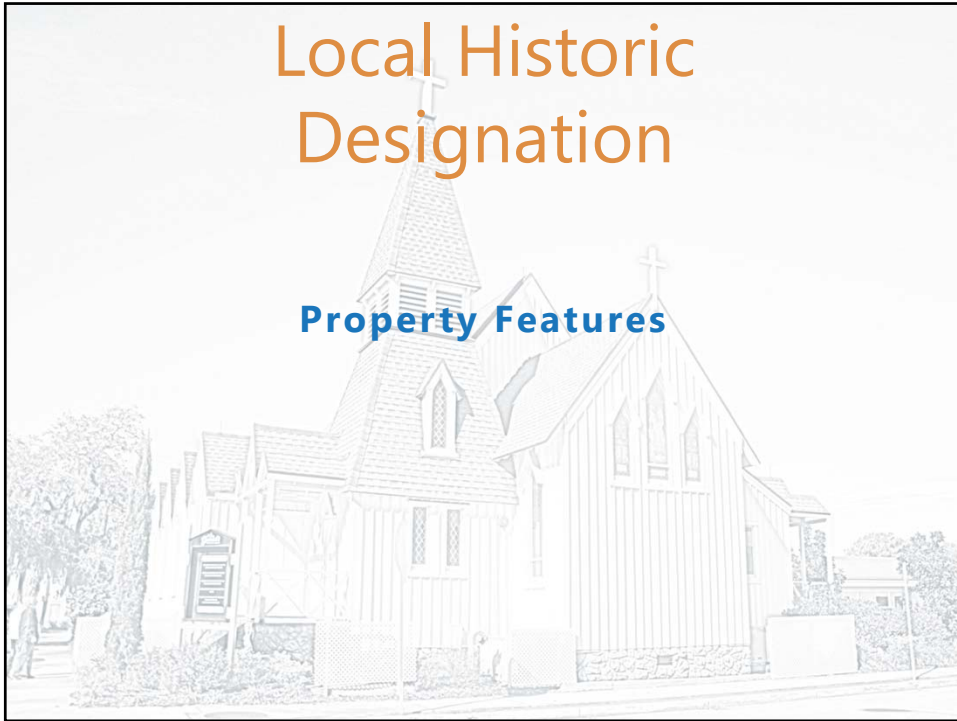
Historic Designation Report



City of Titusville, Florida

Local Historic Designation

Property Features



Property Features



- Exterior Features
 - Neo-Gothic/Gothic Revival Style
 - Front Gable Roof
 - Pyramidal roof steeple/belfry
 - Board and Batten siding
 - Hinged stained glass windows
 - Tall, slender windows with sharply pointed arches



Property Features



- ▣ Additions/Alterations
 - ▣ Capacity doubled in 1961 by adding 5 cross-gabled sections to the sides



Historic Designation Report



City of Titusville, Florida

Property Features



- ▣ Expansion on North and South sides, 1961



1920s



1960s

Historic Designation Report



City of Titusville, Florida

Property Features



- Expansion on North and South sides, 1961



Historic Designation Report



City of Titusville, Florida

Property Features



- Additions/Alterations
 - Major restoration in 1992 to replace support beams, reroof, and repaint
 - Other alterations include carpeting aisles, updating electric system, installation of central heating and air-conditioning, and installation of modern fire sprinklers



Historic Designation Report



City of Titusville, Florida

Property Features

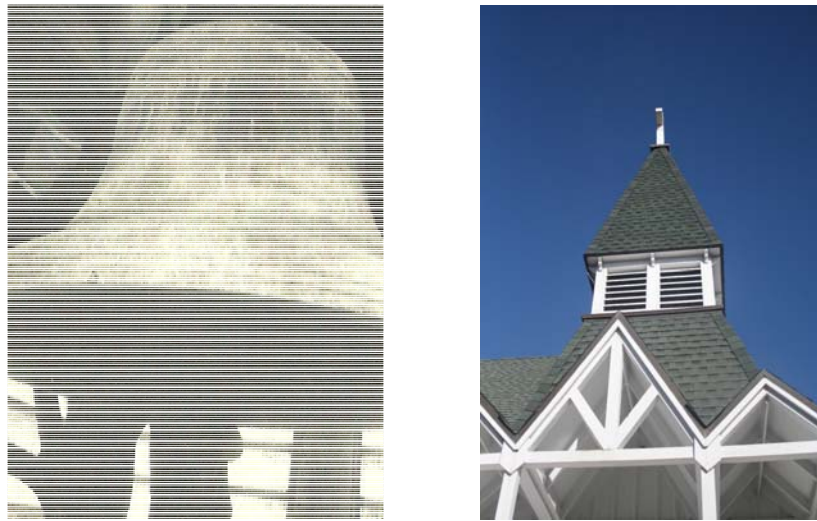


Historic Designation Report



City of Titusville, Florida

Property Features



Historic Designation Report



City of Titusville, Florida

Property Features Stained Glass



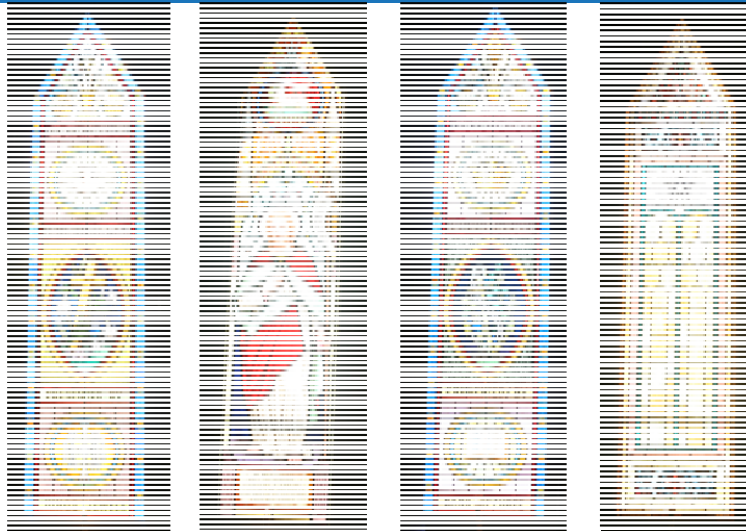
East

Historic Designation Report



City of Titusville, Florida

Property Features Stained Glass



South

Historic Designation Report

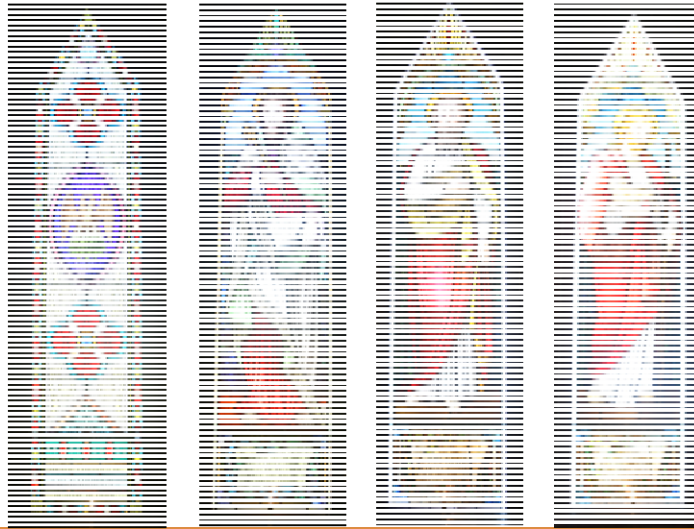


City of Titusville, Florida

Property Features Stained Glass



North



Historic Designation Report



City of Titusville, Florida

Property Features Stained Glass



West



Historic Designation Report

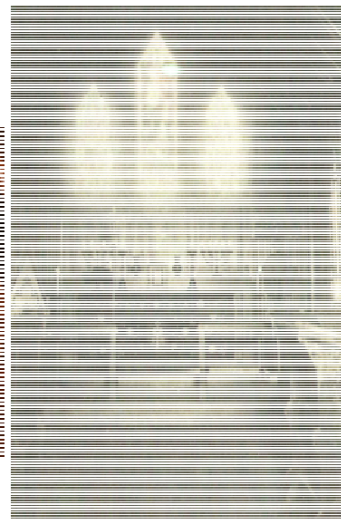
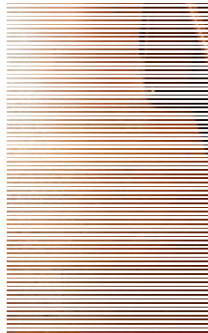
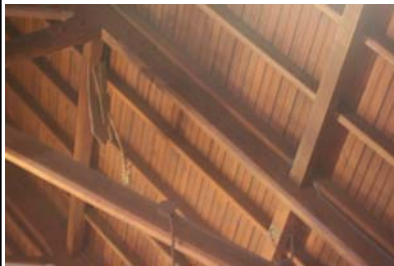


City of Titusville, Florida

Property Features Interior



- ❑ Exposed Framing of Merritt Island Pine
- ❑ Cypress Flooring



Historic Designation Report



City of Titusville, Florida

Property Features



- ❑ National Register of Historic Places, 1973



Historic Designation Report



City of Titusville, Florida

Property Features



Additional Information in the Appendix

Pastors since 1912

The Rev. A. E. Elber	1912-1913
The Rev. R. Perry Lubanks	1913
The Rev. Alan G. Wilson	1913-1914
The Rev. A. B. Gaylor	1914-1916
The Rev. A. B. Gaylor	1916-1918
The Rev. William B. Huxon	1918-1920
The Rev. John Cleveland Lieb, MD	1920-1924
The Rev. Charles I. Dacom	1924-1927
The Rev. George B. Screen	1928-1929

Pastors since 1936

The Rev. Oliver C. Cox	1931-1934
The Rev. Charles I. Dacom	1940-1956
The Rev. William H. Feltwell	1956-1958
The Rev. W. Sumner Frazarman	1958-1967
The Rev. Clark H. Darnan	1967-1970
The Rev. Robert A. Soria	1971
The Rev. John Sauer Wolfe	1972-1976
The Rev. J. Robert Hopcraft	1977-2009
The Rev. Rob Goodridge	2009-present

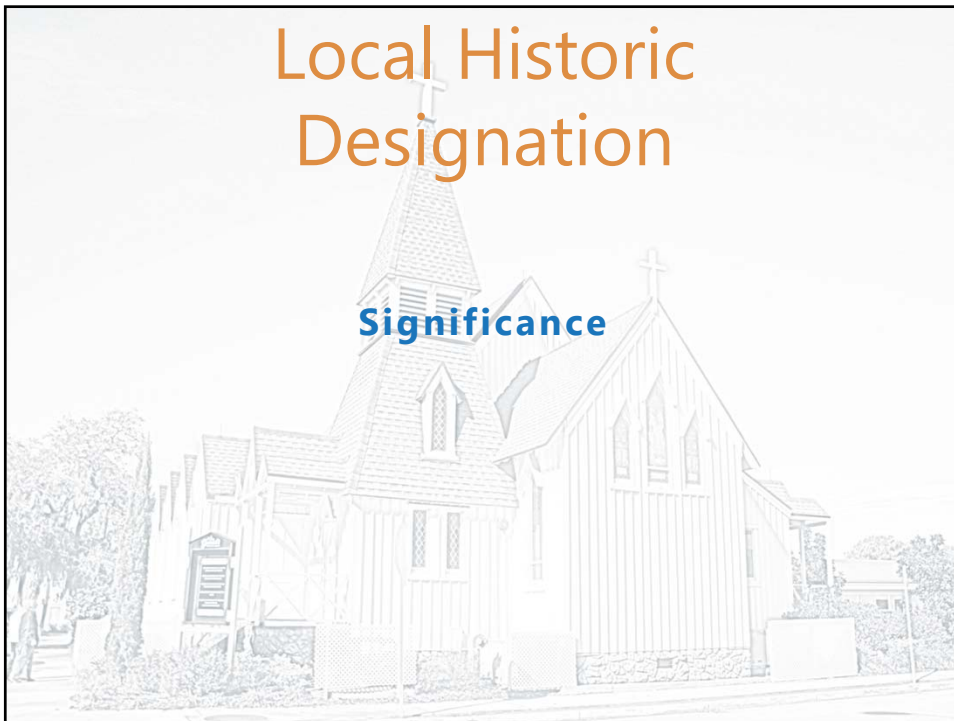
Historic Designation Report



City of Titusville, Florida

Local Historic Designation

Significance



Significance



- Significance
 - Built in 1888
 - The church is significant for:
 - Design and construction
 - National Register Listing
 - The building architecture, Neo-Gothic/Gothic Revival, reflects local trends in architecture during the Florida's Period of Expansion (specifically the stylistic influence of Bishop Edwin Weed).



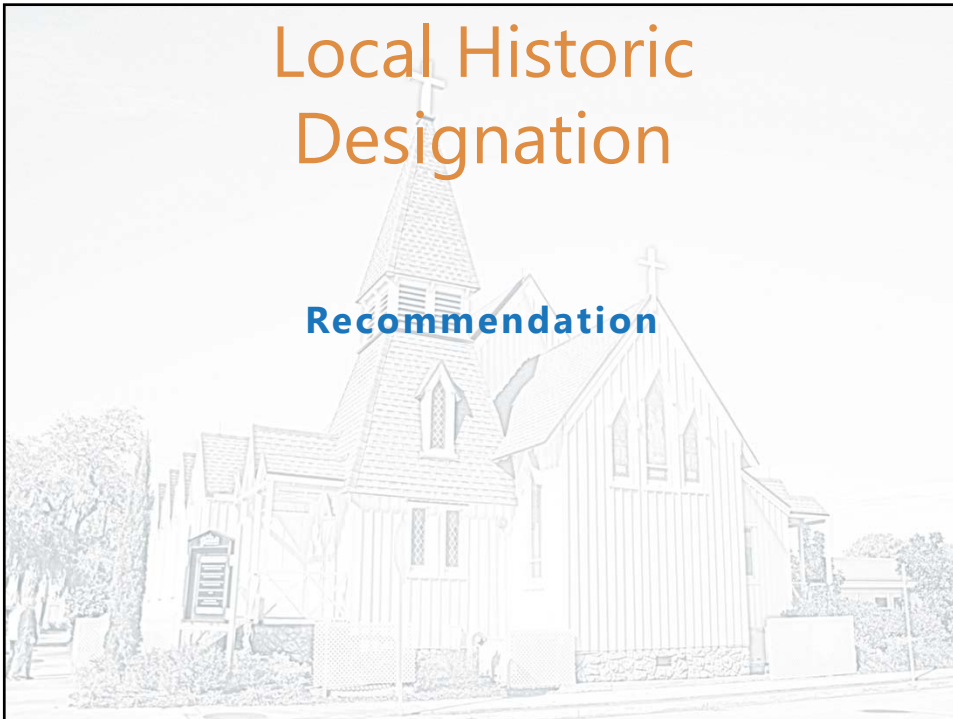
Historic Designation Report



City of Titusville, Florida

Local Historic Designation

Recommendation



Recommendation



- ❑ Options for the Board
 - ❑ Approve the proposed designation
 - ❑ Deny the proposed designation
 - ❑ Amend the proposed designation
 - ❑ Continue the matter for additional information or cause
- ❑ Staff Recommendation
 - ❑ Approve the proposed designation and forward the recommendation to the City Council for final consideration

Local Historic Designation

Questions

