



# Sea Rocket



Florida Native Plant Society ~ Sea Rocket Chapter ~ Serving Central & North Brevard County

December 2016

The purpose of the Florida Native Plant Society is to promote the preservation, conservation, and restoration of the native plants and native plant communities of Florida.

## ~ Sea Rocket ~ Board of Directors

### President

Lois Harris

[lois6459@att.net](mailto:lois6459@att.net)

### Vice President

Armand De Filippo

[armanddf@rcn.com](mailto:armanddf@rcn.com)

### Treasurer

Madeline Klinko

[madeline@digiphase.com](mailto:madeline@digiphase.com)

### Secretary

David Humphrey

[brevcracker@gmail.com](mailto:brevcracker@gmail.com)

## Chapter Representative

Greg Hendricks

[gatorgregh@gmail.com](mailto:gatorgregh@gmail.com)

## Committees

### Membership

### Education/Outreach

Shari Blissett-Clark

[jclark109@cfl.rr.com](mailto:jclark109@cfl.rr.com)

### Nursery

Lois Harris

[lois6459@att.net](mailto:lois6459@att.net)

### Hike Leader

Paul Schmalzer, PhD

[paul.a.schmalzer@nasa.gov](mailto:paul.a.schmalzer@nasa.gov)

### Newsletter

David Humphrey

[brevcracker@gmail.com](mailto:brevcracker@gmail.com)

### Hospitality

Armand De Filippo

[armanddf@rcn.com](mailto:armanddf@rcn.com)

## Join us for our Annual Christmas Banquet at Dixie Crossroads Seafood Restaurant.

1475 Garden Street Titusville, FL 32796

December 11th at 6:00pm

Mark your calendars—Set your alarms—tie a string  
around your finger, but don't miss out on the best food  
and fellowship in Brevard Coming to you

Titusville's own—Dicearandra Thinacola or Titusville Balm



Photo by: Jim Slove taken at the Dicerandra Srub

# December Places To Go, Things To Do!

(Note: All future planning can change presently. If in doubt, verify the date and times are accurate.)

**Every Saturday: GUIDED NATURE HIKES - 10:00am** - For information call 321-264-5185.

**Every Wednesday: FNPS Sea Rocket Chapter Nursery Workday—9am-12noon**, email Lois at [lois6459@att.net](mailto:lois6459@att.net) for further info and schedule.

**December 3 Scottsmoor Flatwoods Sanctuary Field Trip**, hosted by Dr Schmalzer, set for 9 am to 12:00 pm. See page 9 for complete information

**December 3 Dune to Lagoon Guided Hike at the Barrier Island Center (BIC)** to begin at 1:00 pm. Explore the Barrier Island Sanctuary with Master Naturalist Jay Barnhart. Please call to enroll, **321-723-3556**

**December 4 Bay House Workshop** at the BIC 2:00pm. Build a nesting habitat for bats migration with Bat Belfrys Inc Founder Shari Blissett-Clark. Great gift idea. Cost \$40 per bat house/family. Please call to enroll. **321-723-3556**

**December 7 FTA Hike - Prairie Lakes Trail** - meet at 4255 West New Haven in Melbourne at 8:30 am. \$6.00 per car entry fee applies.

**December 10 the Enchanted Forest Photo Club** will make it's December 2016 field trip to Orlando Wetlands Park, 25155 Wheeler Rd. Christmas, FL. We will meet at the park and be ready to walk at **7:15 AM**.

**December 11 Sea Rockets Annual Christmas Banquet** at 6:pm at the Dixie Crossroads Seafood restaurant in Titusville.

**December 14 FTA Hike - Seminole Ranch**. Meet at West entrance of Lowe's parking lot at I-95 and Hwy 50 in Titusville at 8:30 am.

**December 18 Winter Solstice Sunrise Paddle at Fox Lake Sanctuary** at 6:30am. Enjoy a sunrise paddle (6 miles round-trip), campfire, and refreshments at Fox Lake Sanctuary (4400 Fox Lake Rd., Titusville, FL 32754). Please meet at the Fox Lake Park boat ramp at 6:00am. Please RSVP by Thursday, December 15th by calling 321-264-5185.

**December 28 Sea Rocket will not be meeting**

**February 1 Call for research track papers & poster presentations.** Florida Native Plant Society, 2017 conference. See page 8 for full details.

**February 21 thru 26 2017—Mexico Migration of the Monarch Butterflies.** This trip takes you on a guided tour into the middle of one of nature's most amazing phenomena, the migration of the monarchs.

Trip planning by Banner Tours & Travel, LLC. For full information and travel package contact [Bannertoursandtravel@gmail.com](mailto:Bannertoursandtravel@gmail.com) or call (603) 785-2088

Please send calendar items to David Humphrey at [brevcracker@gmail.com](mailto:brevcracker@gmail.com)

For a comprehensive view of Sea Rocket activities go to [www.FNPS.org](http://www.FNPS.org); events, "searocket".

Sea Rocket Chapter  
General Meeting Agenda 11-19-16

Board Members present: Lois, Armand, Madeline, Dave  
**Welcome and Call to Order:** 2:00 pm

**BUSINESS:**

**None**

**Treasurer Report:** None this time

**Refreshments** – Provided by both Sea Rocket and The Friends of the Enchanted Forest. There were pies, and sweetie go's, and drinks. It was a virtual cornucopia of delights.

**ANNOUNCEMENTS:**

**December 3<sup>rd</sup>** – Scottsmoor Flatwoods Sanctuary - 9:00am Dr. Paul Schmalzer

**EVENTS:**

**December** – 12/11 Sea Rocket Chapter Annual Holiday Dinner @ Dixie Crossroads Seafood Restaurant

**BOD meeting – Nov 8** @ New York, New York in Titusville starting at 5:30

**OTHER ANNOUNCEMENTS:** **Elections coming up February 2017.** There are several positions that need to be filled. Open position on the Board will be;

Vice President,  
Membership,  
Education / Outreach, and  
Chapter Representative

All other positions accepting nominations

FNPS Sea Rocket Chapter Meeting was adjourned at 2:13 pm

**Guest Speaker – This was a combined meeting of the “Friends” and Sea Rocket.** The guest speaker was David Sime, the President of the photography club. David showed us some of his best pictures. Not all of them, or we would be there until Christmas. World class, National Geographic quality nature photos. David offers hikes to local areas for photo ops with nature. Make no mistake, photography is an art, and needs to be learned to perfect. If anyone is interested in photography, the photography club is a great place to begin.

For those who miss the warmth and beauty of a Florida day, consider those above the Arctic Circle. Worst case on December 21, in Florida we lose the sun for 13 hours and 41 minutes. Above the Arctic Circle they lose the sun on Sept 23rd, 2016. ! The sun rises again on March 21st, 2017! One hundred and seventy nine days later.

Now that's a long night.



# Weed Alert

Have you seen this plant? Contact us at 850-617-9430.



## Tropical nutrush *Scleria microcarpa*

*Scleria microcarpa* is a graminoid member of the Sedge family, Cyperaceae. This species is approximately 0.5 to 1.25 meters (1.6 - 4 feet) in height.



It is currently found in the canopied, cypress-dominated floodplain of Lake Hatchineha. However, other wetland areas would also provide suitable habitat, and should also be examined. Current research is investigating the most effective control methods.

## Dicerandra Scrub Sanctuary Field Trip.

By Jim Slone

It was Saturday morning with pleasant temperature and a sunny sky when we gathered at the western end of the Indian River Plaza for a walk-about with Dr. Paul Schmalzer. What we all wanted to see was a flowering *Dicerandra thinicola* or Titusville mint/balm that grows only in the Titusville area.

Dr. Schmalzer got our group together and passed out a five page species list for the Dicerandra Scrub Sanctuary, then explained that our trip had two parts. The first walk was up the sandy road along the power line right-of-way. Then we would walk back down hill and enter the scrub sanctuary through a fence gate near the parking lot. Dr. Schmalzer brought our eyes toward the dry sandy environment of the right-of-way and adjacent scrub sanctuary. "It's a tough place to make a living." He said, and I thought that's Titusville for you.

As we walked, he pointed out the different species with their scientific names, I just looked, touched, listened and photographed the amazing variety of plants surviving and flourishing along our sandy ridgeline. Near the top of the hill we started to see some isolated examples of blossoming *Dicerandra thinicola*. At the top larger groups of the Titusville balm or mint made a good show of flowers for my camera. The individual blossoms are small and a close look is required to see how lovely and unique the plant is when in bloom.

Dr. Schmalzer pointed to a plant growing on undisturbed ground beneath the power lines. "It's called Gopher apple, and is a food source for the Gopher Tortoise", he said, and then proceeded to eat one of its small fruit just like the early people living in the area.

As soon as we entered the scrub sanctuary, Dr. Schmalzer was pointing out two rarely seen ground cover plants. Many of us were on the ground with him looking at fruit in the sandy ground beneath spreading plant leaves of the Coastal dune sand mat (*Chamaesyce cumulicola*). Both of these plants were having a good year, showing significant growth over the open sandy area and benefiting from the

sanctuary's protection and adequate rainfall.

The edge of the scrub oak forest lies along a fence protecting the sanctuary from Titusville, and that route also led us downhill to the depression area. It was full of water from the hurricane and the many varieties of bunch grasses were tall and plumed. The depression area and the forest edge path added as many interesting native plants to everyone's species list notes as were found on the power line right-of-way walk. We found the path through the scrub oak forest and that started a lesson on three types of scrub oak species in the sanctuary. There are two white oak specie... Chapman's Oak (*Quercus chapmanii*) and Sand Live Oak (*Quercus geminata*), as well as, one red oak specie the Myrtle Oak (*Quercus myrtifolia*) in the Dicerandra Scrub Sanctuary. Those types of scrub oaks bloom and produce acorns on different yearly cycles, while the red oaks and white oaks have non-synchronized acorn production.. Apparently that out-of-sync acorn production is a boon to the wildlife such as the Scrub Jay. If one type has a failed production of acorns, then the other type may have enough to sustain the birds through that lean year. It was an enjoyable three hour tour of the Dicerandra Scrub Sanctuary, but a word of warning... use insect repellent on your shoes, socks and pants legs or suffer from multiple chigger irritations on your ankles and even up to the belt area of your body.



Dicerandra Scrub land putting on it's fall colors.



*Liatris tenuifolia*



Coastal dune sand mat. (photos compliments of Jim Slone)

## More on Drought Mitigation in California.



Removing lawns may sound like a small, wonky step, compared to building dams. But the green turf in American yards actually stands as a worthy target for water savings, a public enemy in the eyes of many during a drought such as California's five-year-old one.

The U.S. Environmental Protection Agency estimates one-third of all water used by American households goes to watering lawns and gardens. That's 9 billion gallons of water each day — enough to supply drinking water daily for nine cities the size of New York.

In 2015, after a devastatingly dry winter, Gov. Jerry Brown ordered 25-percent water conservation by cities and towns. He mandated \$25 million in state-government spending to help cover the costs of low-income California families in particular removing their grass, and putting less-thirsty, climate-suitable plants in their yards instead, ([read as xeriscaping](#)).

Figuring out whether California's experiment made sense economically is more involved than just totaling how much turf residents have ripped out. Two key questions are whether households leave the lawns off for a generation or two, and whether each rebate helps turn Californian tastes away from lawns, independent of future rebates.

The state will go deeper still into the number-crunching, tallying not just water savings but spin-off savings. They range from lower energy costs for piping less water to households to reduced climate-changing pollution from lawn mowers, said Ken Frame, a project manager at

California's Department of Water Resources.

Rebates aren't about trying "to buy up all the turf in California — that wouldn't be cost-effective," said Ellen Hanak, director of the water-policy center at the Public Policy Institute of California.

Instead, the rebates have built awareness that water-thrifty landscapes also look good, Hanak said.

In Santa Rosa, a city of about 170,000 in Northern California wine country, homeowner Trudi Schindler took the rebate to replace deep-green grass with flagstone pavers and a silvery-green groundcover with yellow flowers. Schindler wouldn't go back to grass.

"It looks beautiful and sophisticated. And just more lovely than a lawn," she said.

<https://www.yahoo.com/news/california-350-million-social-experiment-over-lawns-061743851.html>

### F.Y.I.

### **Xeriscaping - zeer-i-skey-ping**

(Reprint from June 2014 SR Newsletter)

is landscaping and gardening that reduces or eliminates the need for supplemental water from irrigation. In some areas, terms such as water conserving landscapes, drought tolerant landscaping are used instead. Plants whose natural requirements are appropriate to the local climate are emphasized, and care is taken to avoid losing water to evaporation and run-off. The specific plants used in xeriscaping depend upon the climate. **Xeriscaping is different from natural landscaping, because the emphasis in xeriscaping is on selection of plants for water conservation, not necessarily selecting native plants.**

(from Wikipedia and Dictionary.com)

## Scottsmoor Flatwoods Sanctuary Field Trip Announcement

**Saturday December 3, 2016 0900-1200**

Scottsmoor Flatwoods Sanctuary. This is a 2008 acquisition by the Brevard County Environmentally Endangered Lands Program with assistance from The Nature Conservancy. Vegetation is primarily scrubby flatwoods, mesic flatwoods, cypress strand, hammocks, and marshes. Prescribed burning has been conducted since acquisition.

Directions:

Meeting site is Parrish Park (Brevard County) which is about in the center of the eastern section of the Sanctuary.

Take I-95 North to Exit 231 (County Road 5A/Stuckway Road). Go right (East) on CR-5A about 1 mile to US 1. Go right (South) on US 1 about 1.1 mile to Magoon Road. Go right (West) on Magoon Road to the end (about 0.2 mile). Parking is available at the county park.

Bring hat, sunscreen, water, and insect repellent.

## The Florida Native Plant Society 2017 Conference, “CONNECTIONS” May 18-21, 2017

Join us on a safari to wild Florida at the 37th Annual Florida Native Plant Society 2017 Conference. You will see plants and plant communities found nowhere else in the world! Retreat to an ancient landscape of old beach ridges, wild prairies, panther habitat, and islands of subtropical trees in central-south Florida.

Our theme is “Connections” and our venue is located in the heart of the historic Everglades watershed.

We are in negotiations with world-class speakers, including Dr. Susanne Simard who has received great renown for her research on the underground networks in forests that are characterized by interconnected webs of fungi and roots that facilitate communication and interaction between trees and plants.

Amazing field trips will be offered within the Everglades Headwaters National Wildlife Refuge, including Kissimmee Prairie Preserve State Park, Three Lakes Wildlife Management Area, Lake Wales Ridge State Forest, Disney Wilderness Preserve, Lake Kissimmee State Park, KICCO Wildlife Management Area, Lake Arbuckle State Park, and South Florida Water Management District's Kissimmee River Restoration Project.

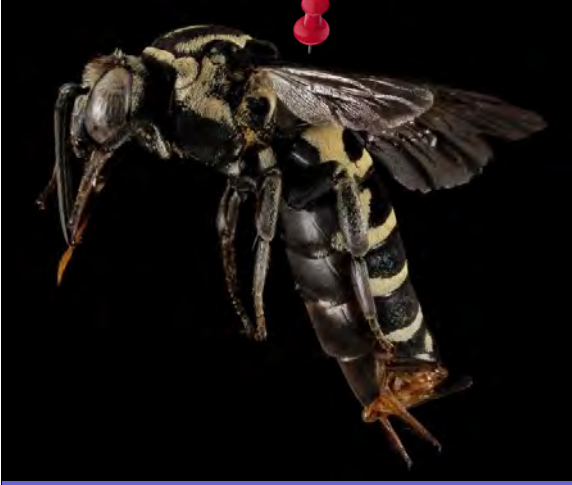
Reserve your lodging, RV and camping spots soon! There is a limited number of each room type available, so to make sure you get the accommodations you prefer and make your room registrations now. For the complete details and hotel contact information, visit our [2017 Conference website](http://www.fnps.org/conference/2017). (<http://www.fnps.org/conference/2017>)

**Any questions, please direct them to Juliet Ryne at [julietrynear@yahoo.com](mailto:julietrynear@yahoo.com)**

**[Save the Date and Reserve Lodging Now!](#)**

# Community Corner

## News for and about your Chapter



### A RARITY— A BEE RECOVERED.

A rare specimen indeed, *Triepeolus monardae* hadn't been seen for 20 years until a researcher found one in a Georgia longleaf pine plantation two years ago.

PHOTOGRAPH BY SAM DROEGE, USGS

### FNPS—A Passion for Public Lands

The Society (FNPS) fulfills its mission in many ways, including supporting conservation land acquisition and management of those lands that enhances the diversity of our native plants as well as the health of our native ecosystems. As Society members we have unique opportunities to use our **knowledge** and passion to help usher along the stewardship of our public lands. Aldo Leopold (1887–1949) championed environmental stewardship based on a land ethic "dealing with man's relation to land and to the animals and plants which grow upon it."

As shareholders, would you like to know more about public land ecology and stewardship? Would you like to play a role in ensuring the health and beauty of ecosystems long into the future? If so, we invite you to attend a program "A Passion for Public Lands" which will be coming soon to your local chapter.

The steps to becoming an active participant in public lands stewardship aren't difficult and we guarantee they will introduce you to interesting ecological concepts and the fascinating relationships between plants, the ecosystems in which they thrive and other species.

## CALL FOR RESEARCH TRACK PAPERS & POSTER PRESENTATIONS. FLORIDA NATIVE PLANT SOCIETY 2017 CONFERENCE.

The Florida Native Plant Society Annual Conference will be held in Westgate River Ranch Resort, River Ranch, Florida, **May 17-21, 2017**. The Research Track of the Conference will include presented papers and a poster session on Friday May 19 and Saturday May 20.

Researchers are invited to submit abstracts on research related to native plants and plant communities of Florida including preservation, conservation, and restoration. Presentations are planned to be 20 minutes in total length (15 min. presentation, 5 min. questions).

Abstracts of not more than 200 words should be submitted as a MS Word file by email to Paul A. Schmalzer [paul.a.schmalzer@nasa.gov](mailto:paul.a.schmalzer@nasa.gov) by **February 1, 2017**. Include title, affiliation, and address. Indicate whether you will be presenting a paper or poster.

## The Clearwing Hummingbird Moth.

This may not be news to our Autobom friends, but to me, I was stunned. The clearwing Hummingbird moth has visited my fire-bush (*Hamelia patens*) several times, and each time I would report seeing a "hummer". It is amazing how the hummingbird moth imitates the real McCoy. I now focus my attention on the beak to answer the question "Does he? Or doesn't he, have a beak?"

"*Hemaris thysbe*, commonly known as the hummingbird clearwing, is a moth of the Sphingidae (hawkmoth) family." So sayeth Wikipedia.

Editor Dave ~



to me, I was stunned. The clearwing Hummingbird moth has visited my fire-bush (*Hamelia patens*) several times, and each time I would report seeing a "hummer". It is amazing how the hummingbird moth

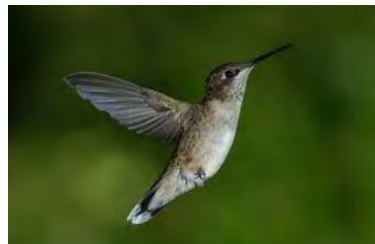
imitates the real McCoy. I now focus my attention on the beak to answer the question "Does he? Or doesn't he, have a beak?"

"*Hemaris thysbe*, commonly known as

the hummingbird clearwing, is a moth of the Sphingidae

(hawkmoth) family." So sayeth Wikipedia.

Editor Dave ~



This bird is the real deal



## Mission Accomplished

After ten years of working with University of Central Florida, 77 reefs, 45,000 oyster mats and help from more than 48,000 volunteers, we've reached our goal of restoring oyster reefs in Mosquito Lagoon in Canaveral National Seashore! This is potentially enough to "recruit" **10.6 million** adult oysters, each of which can filter up to **50 gallons of water per day**. There's a lot more work to do, so we'll continue to deploy mats and bags elsewhere in the Indian River Lagoon.

**Editor** - According to my figures best case would be 530,000,000 (530 million) gallons daily.

Hosting the Sea Rocket Newsletter since 2001;

David N. Rich

**Peak Performance Co.**

4030 Winter Terrace, Titusville, FL 32780

**321-267-7367**

[DavidNRich@gmail.com](mailto:DavidNRich@gmail.com)

[www.AboutTitusville.com](http://www.AboutTitusville.com)

**Tulinda's Garden**

Garden & Landscape Design  
Horticultural Consultation

Linda Gombert

[www.TulindasGarden.com](http://www.TulindasGarden.com)

Phone 321-639-4017

Mobile 321-446-9338

Teach. Grow. Live.   
**Naturewise**  
Naturally.

**Florida Native & Edible Plants,  
Landscape Consultations,  
Workshops, & More!**

[www.naturewiseplants.com](http://www.naturewiseplants.com)



**Florida Native Plants  
Organic Vegetables & Herbs**

7619 Henry Avenue  
W. Melbourne, FL 32904  
321-729-6857

**Maple Street Natives**

[info@maplestreetnatives.com](mailto:info@maplestreetnatives.com)

[www.maplestreetnatives.com](http://www.maplestreetnatives.com)

[www.facebook.com/maplestreetnatives](https://www.facebook.com/maplestreetnatives)

**green images**

*Florida Native Landscape  
Plants*

**1333 Taylor Creek Road  
Christmas, Florida 32709**

**The Enchanted Forest Sanctuary Education Center**

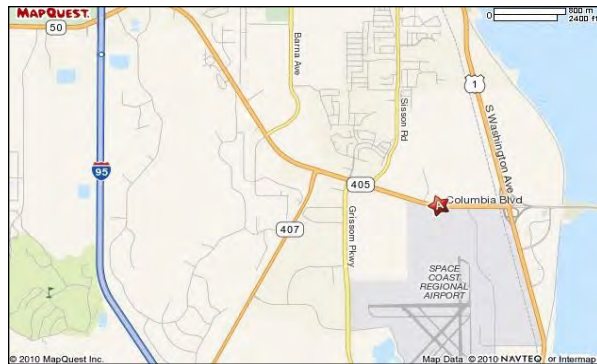
444 Columbia Blvd, Titusville, FL 32780 321-264-5185



Driving Directions to the Sanctuary:

**From I-95 Northbound:** take SR-407 Exit 212 east 2.7 miles to SR-405 intersection. Turn right onto SR-405 and go east 1.9 miles (the Sanctuary entrance is on the left 0.4 miles past Sisson Road)

**From I-95 Southbound:** take SR-50 Exit 215 east. Turn left onto SR 50 and turn right onto SR-405 (2nd light) Travel 3.6 miles (the Sanctuary entrance is on the left 0.4 miles past Sisson Road)



**Florida Native Plant Society**

For membership information, address change: P. O. Box 278, Melbourne, FL 32902-0278

Phone: 321-271-6702; Fax: 321-951-1941; Email: [Info@fnps.org](mailto:Info@fnps.org)/[www.fnps.org](http://www.fnps.org)

Sea Rocket Chapter mailing address: 444 Columbia Blvd, Titusville, FL 32780



**Sea Rocket Chapter**

444 Columbia Blvd,  
Titusville, FL 32780

**GO GREEN! RECEIVE YOUR NEWSLETTER VIA EMAIL AND SAVE SOME GREEN! GO GREEN!**