



Sea Rocket



Florida Native Plant Society ~ Sea Rocket Chapter ~ Serving Central & North Brevard County

MARCH 2021

The purpose of the Florida Native Plant Society is to promote the preservation, conservation, and restoration of the native plants and native plant communities of Florida.

~ Sea Rocket ~

BOARD of DIRECTORS

President

Linda Sackman

Vice President

Kristina Jackson

Treasurer

Patti Larson

Secretary

Laura Covell

Chapter Representative

Elizabeth Bishop

COMMITTEES

Membership

Barbara Gwiazda

Education/Outreach

Janina Shoemaker

Nursery

Lois Harris

Hike Leader

Paul Schmalzer, PhD

Newsletter

Jill Whitson

Digital Archivist

David Humphrey

Social Media

Kate Chiodini

Hospitality

Armand De Filippo

2021 Board

Welcome to our new and returning board members:

President: Linda Sackman (New)

Vice President: Kristina Jackson (New)

Treasurer: Patti Larson (Returning)

Secretary: Laura Covell (New)

Chapter Representative: Elizabeth Bishop (New)

2021 Committee Leaders

Welcome to our returning committee leaders:

Membership: Barbara Gwiazda

Education/Outreach: Janina Shoemaker

Nursery: Lois Harris

Hike Leader: Paul Schmalzer PhD

Newsletter: Jill Whitson

Digital Archivist: David Humphrey

Social Media: Kate Chiodini

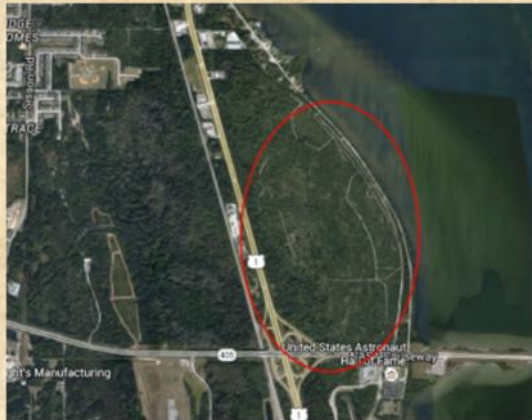
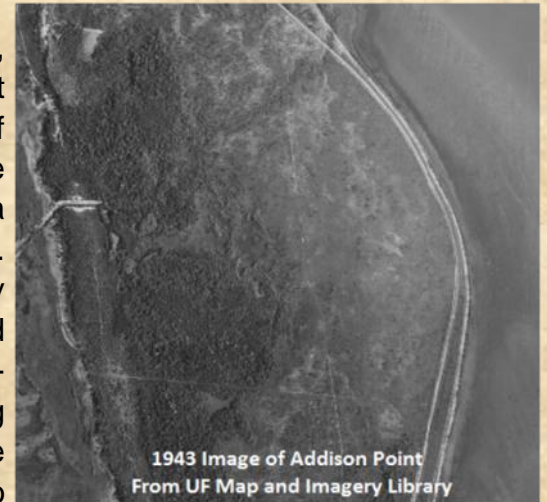
Hospitality: Armand De Filippo

Saying Goodbye

By Ron Chicone, Jr.

March 1, 2021

Across US Highway 1 from the Enchanted Forest Sanctuary, and just north of the NASA Causeway, lies one of the last large tracts of unspoiled riverfront habitat on the east coast of Florida. Occupying a graceful arch of land extending into the Indian River Lagoon, it is roofed in stately South Florida Slash Pines and buttressed with plumes of saw palmetto. Though I never set foot on it, I fantasized of exploring it many times as I passed by on my way to work at the Enchanted Forest Sanctuary. Perhaps you to have driven by it and wondered what mysteries it might hold. At over 300 acres fronting the Indian River Lagoon, across from the Kennedy Space



Center and adjacent to the 500-acre Enchanted Forest, I always imagined that this stretch of coastal flatwoods had the pedigree to make a great Florida State Park. However, with the value of coastal property in Florida, and the attraction of waterfront living, I knew that the chances of it being saved for conservation and public use were slim. And now it seems the wait is over; the excavators and dozers have arrived. The life that exists there is being removed and replaced with a residential development that will bring high-end homes, luxury living, and an enhanced tax base to Titusville. The development, Antigua Bay, has started on its first phase which will include 84 acres of residential subdivision with a stormwater facility and about three acres of upland buffer along the Lagoon.

It is zoned as "Vacant Land," but it is not vacant at all, and I would like to recognize the loss of these beautiful trees, shrubs, wildflowers and grasses, as well as all the wildlife they supported, the genetic diversity they carried, and the clean air and water they created. However, I don't wish to demonize the developer or



those who are benefiting from the project. I myself live in a house and drive on a street that was once natural habitat. But watching this destruction reminds me that I must work harder to promote sustainable balance between conservation and concrete, and do more to advance the inherent value of native landscapes and the services they provide to society.

For more information go to St. Johns River Water Management District website, Project 101244-6:
<https://permitting.sjrwmd.com/ep/#/prmtInfo?curlId=&hdr=1&usrId=20920&offclId=101244&seqNo=6>



ARE YOU ON FACEBOOK? Did you know there are many groups available

Here are a few, and there are more. Search for Native Plant pages to keep yourself up-to-date and informed.

- Florida Native Plant Society
 - Florida Native Gardening
 - Florida Native Plants Art Group
 - Florida, See it like a Native
 - Florida Native Wildflowers
 - Florida Native Bees
 - Central Florida Native Plants
 - Native Florida Plants
 - Native Florida Plants Identified
 - Florida Native Plant Propagation
 - Mangrove Chapter of Florida Native Plant Society
 - Florida Butterflies
 - Florida native Orchids
-And many more





Another Adopt-a-highway opportunity !

To all our steadfast volunteers!

This wonder-filled chance to be seen by the public serving the County by beautifying our local roadside is planned for April 1st. Weather permitting, we will gather in front of the Enchanted Forest by 8:30 am. We will be cleaning to our West. Bring a hat, gloves, waterproof closed toe shoes, water, bug spray and an adventurous spirit.



The whole activity is about one hour! We look forward to seeing you!

GARDEN VOLUNTEERS

Lois will be working in the gardens at the Enchanted Forest on the 2nd Saturday of each month from 9:00AM to 1:00PM. Staff also has sanctuary workdays on the 3rd Saturday. Everyone is invited to join in when they can. Participants should bring water, wear closed-toe shoes and bring their own tools, including gloves.



The Environmentally Endangered Lands (EEL) Program was established in 1990 to protect the natural habitats of Brevard County by acquiring environmentally sensitive lands for conservation, passive recreation, and environmental education.

This was made possible by citizens who voted to tax themselves for the acquisition and maintenance of Brevard's natural areas. Residents reaffirmed the EEL Program in 2004 under a second referendum to protect the natural habitats within Brevard County by the acquisition of environmentally sensitive lands through a willing seller program for the purpose of conservation, passive recreation, and environmental education.

To stretch these funds as far as possible, the EEL Program forms partnerships with federal, state and local agencies that are committed to the protection of natural resources and our long-term quality of life. EEL sanctuaries are managed to preserve native habitats and the plants and animals that live there.

For more information and to see their March calendar, visit <http://www.brevardfl.gov/EELProgram>

VOLUNTEER HOURS ARE FOR EVERYONE—If you have a high school student that is lacking Bright Future Hours, please consider local opportunities.



**Space Coast
Virtual Photography Experience
March 26 - 28, 2021**

The Space Coast Virtual Photography Experience brought to you by Hunt's Photo and Video!

[For more Information](#)

Or Search on Google:

[space coast virtual photography experience](#)



[For more Information](#)

***REPLAY* the 24th Annual Space Coast
Birding and Wildlife Virtual Festival**

Featuring 30+ Presentations About Birding in Florida and
Around the World, Bird ID Webinars, Photography Sessions,

Virtual Field Trips, and Live Feeds from the

Merritt Island National Wildlife Refuge Until July 31, 2021.

Packages starting at \$59

**View a variety of different package options
and reserve your
Virtual Festival Experience Now.**

The Enchanted Forest Sanctuary Education Center

444 Columbia Blvd, Titusville, FL 32780 321-264-5185

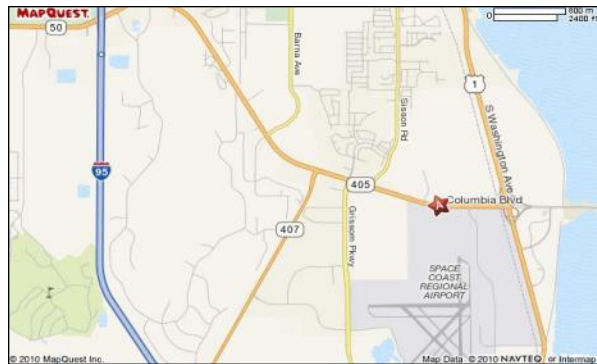


Driving Directions to the Sanctuary:

From I-95 Northbound: take SR-407 Exit 212 east 2.7 miles to SR-405 intersection. Turn right onto SR-405 and go east 1.9 miles (the Sanctuary entrance is on the left 0.4 miles past Sisson Road)

From I-95 Southbound: take SR-50 Exit 215 east. Turn left onto SR 50 and turn right onto SR-405 (2nd light) Travel 3.6 miles (the Sanctuary entrance is on the left 0.4 miles past Sisson Road)

From U.S. HWY 1: go west 0.5 miles on SR-405 in south Titusville. Sanctuary entrance is on the right.



Florida Native Plant Society

For membership information, address change: P. O. Box 278, Melbourne, FL 32902-0278

Phone: 321-271-6702; Fax: 321-951-1941; Email: Info@fnps.org/www.fnps.org

Sea Rocket Chapter mailing address: 444 Columbia Blvd, Titusville, FL 32780



FNPS 2021 Endowment Grant Research Awards, Conservation Grant Awards and the Dan Austin Award for Ethnobotany.

Dr Paul Schmalzer, PhD, Science Committee Chair.

- **Endowment Research Grant** of \$1500 or less for research on Native Plants
- **Conservation Grant** of \$5000 or less for native plant conservation projects in Florida.
- **Dan Austin Award for ethnobotany** of \$1500 to graduate or undergraduate students who are studying the relationship between people or cultures with native plants.

To apply for a grant application, guidelines can be found on the [FNPS](http://www.fnps.org) web site. Click on "What we do" => Awards and Grants.

Application deadline is March 5th, 2021. Awards will be announced at the May 2021 Annual Conference. Awardees do not have to be present to receive their award.

Please send any questions to info@fnps.org.

Be sure to check out the bi-monthly newsletter of the

Florida Native Plant Society



Located online at : <http://fnps.org/resources/sabalminor>